

# Bring these items to the District Transfer Station for special recycling!

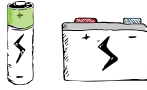
**ALL of the following items are accepted at the District Transfer Station at little or no charge.**

Location: 1223 Route 7 South in Middlebury. Hours: Mon-Fri, 7 - 3 pm and Saturdays, 8 - 1 pm (for HazWaste hours, see red box on right). For disposal fees or for a list of landfill-banned items, call us or visit our website.



**APPLIANCES** (major) • AC units, dehumidifiers • washer/dryers • fridges • freezers • microwaves, stoves • woodstoves, etc.

**BATTERIES** • wet-cell • cell phone • automotive • small dry-cell, button cell • NiHM, NiCad • rechargeable • lithium, lithium ion



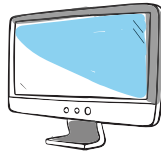
**BOOKS**  
hard and soft cover



**DOCUMENTS**  
for secure destruction



**ELECTRONICS** • computers, monitors & peripherals • TVs • video game consoles • answering machines • MP3, DVD & CD players • VCRs • stereo equipment • power supply cords



**FOOD  
SCRAPS**

including meat  
and bones

**FIRE  
EXTINGUISHERS**



**FLUORESCENT LIGHT BULBS**  
• compact fluorescent lamps • U-tube, circular or straight tubes • HID • UV, Neon or other specialty lamps



**LEAVES & YARD DEBRIS**  
• Trimmings • garden plants • mulches • grass clippings, etc.

**MERCURY DEVICES**

• thermostats • intact thermometers, etc.



**PLASTIC BAGS, FILM & WRAP**  
Must meet acceptance criteria



**PROPANE TANKS**  
• 1-lb camping • 20-lb grill size, etc.

**SCRAP METAL**

Any item at least 80% made from metal.



**SHAVING RAZORS**  
• Disposable heads and handles

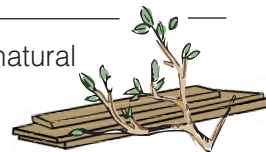
**TIRES**



**USED OIL**  
including filters  
and cooking oil



**WOOD** • clean lumber & natural wood (no paint, stain, chemicals, or glue.)



## HazWaste

HazWaste Center hours are Mon-Fri, 8 - 2 pm and Saturdays, 8 - 1 pm.

Household products with labels that contain the words "Warning," "Danger," "Poison," or "Caution" DO NOT belong in the trash. Instead, bring these items to our HazWaste Center at no charge to District Residents:

Automotive & engine supplies & fluids  
Home improvement supplies, including:

• paints • stains • thinners  
• varnish • adhesives • tars



Household cleaners, drain openers, etc.  
Garden supplies, fertilizers • pesticides  
Gas cylinders

Mercury containing devices & lighting

**PLEASE NOTE:** Businesses with hazardous waste must register for an appointment time, and are responsible for all disposal costs.

## REUSE

The District's **REUSE IT OR LOSE IT!** sheds are closed due to social distancing guidelines during the pandemic. Please consider other ways to donate household goods and building materials in reusable condition. Methods include donating goods and materials to family and friends or by way of Front Porch Forum, Facebook Marketplace, FreeCycle, Craigslist, yard sales and thrift stores accepting donations.

## Town Drop-Offs

District residents & businesses can bring trash, recycling, food scraps and leaf & yard waste to one of 16 town drop-off stations. Some exclusions apply. To learn more, visit [AddisonCountyRecycles.org](http://AddisonCountyRecycles.org) and search, "Town drop-off."



ADDISON COUNTY  
SOLID WASTE  
MANAGEMENT DISTRICT

## The Mini-Disposal Guide for Residential Reusables, Recyclables Compostables & Trash in Addison County

**Recycling: It's the law  
in Vermont.**

**It is illegal to throw recyclables  
and other banned items away  
as landfill-bound trash.**

**? Got questions about disposal  
options, fees, and specifications?  
Contact ACSWMD!**

**Phone:** (802) 388-2333

**E-mail:** [info@acswmd.org](mailto:info@acswmd.org)

**Visit:** [www.AddisonCountyRecycles.org](http://www.AddisonCountyRecycles.org)

**Location:** 1223 Rte. 7 S., Middlebury

**? Got questions about your curbside  
pickup service?  
Contact your hauler.**



Printed on 100% post-consumer recycled paper

**BUT WAIT, THERE'S MORE!** For info on what to do with over 100 materials, visit our website and click on the A to Z Guide.



# Mandatory Recyclables. Banned from landfill disposal. No food residue. Items must be clean, empty & dry.

## PAPER

\* MUST BE EMPTY, CLEAN & DRY.\*

NEWSPAPERS, MAIL,  
OFFICE PAPER, ETC.



## CARDBOARD & BOXBOARD



**NOPE:** Food residue • paper cups • Tyvek, plastic, foil, or waxed “paper” • padded mailers • plastic bags • paper towels & plates • spiral or 3-ring binders • animal food or litter bags • stickers or sticker backing

## PLASTIC

\* MUST BE EMPTY, & RINSED CLEAN.\*

### BOTTLES, TUBS & JUGS



### SINGLE-USE FOODWARE



**NOPE:** Food residue • filmy plastic (bags, pellet bags, wraps, bubble wrap) • durable items (toys, housewares) • hazardous product containers • Styrofoam • utensils • compostable or biodegradable “plastic” • loose caps or lids under 2” across

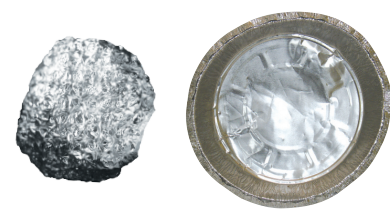
## METAL

\* MUST BE EMPTY, & RINSED CLEAN.\*

### CANS



### ALUMINUM FOIL & PANS



**NOPE:** Food or beverage residue • propane tanks • batteries • scrap metal • containers or aerosol cans that once held hazardous materials • caps, lids or jar lids under 2” across

## GLASS

\* MUST BE EMPTY, & RINSED CLEAN.\*

### BOTTLES



### JARS



**NOPE:** Food residue • light bulbs • dishes • Pyrex • ceramics • drinking glasses • vases • window panes • mirrors • candle jars • loose plastic or metal caps or lids smaller than 2” across

**Common Blue Bin No-Nos:**  
**Greasy pizza boxes & unrinsed jars & jugs** • Not recyclable with leftover food, grease, detergent, etc.  
**Shoes & clothing** • Not accepted in recycling bins.  
**Automotive parts & other scrap metal** • Only metal food & beverage containers allowed in blue-bins recycling. Recyclable only in scrap metal bin at District Transfer Station.  
**Plastic bags, Styrofoam in any form** • Not accepted in blue bins! See Q&As for more info. →

**Q: Why aren't plastic bags recyclable in my blue bin?** A: They get tangled in the recycling equipment, causing facility shutdowns. The District Transfer Station accepts certain bags for special recycling.  
**Q: Why aren't paper cups recyclable?** A: They have an unrecyclable plastic or wax coating.  
**Q: Do I really have to rinse my plastic & glass recyclables?** A: Yep. Recycling works because companies that buy recyclables to make into new products need those recyclables to be uncontaminated. Food & beverages are contaminants. **Hint:** Soak that peanut butter jar in hot, soapy water overnight— It'll be easier to clean.

**Q: Why isn't Styrofoam recyclable?** A: We don't produce enough in Addison County to make it economically or environmentally feasible to collect it and ship it to market. We recommend giving Styrofoam peanuts to local shipping companies or to those who regularly ship items.  
**Q: Why isn't everything with a number recyclable?** A: Many people may be surprised to learn that the recycling symbol, also known as the chasing arrows symbol does not indicate a products recyclability. The symbol is simply meant to indicate the type of plastic the item is made out of.

**NOTE:** All items should be at least 2” on any 2 dimensions.

