



Bring these items to the District Transfer Station for special recycling!

ALL of the following items are accepted at the District Transfer Station at little or no charge.

Location: 1223 Route 7 South in Middlebury. Hours: Mon-Fri, 7 - 3 PM and Saturdays, 8 - 1 PM (for HazWaste hours, see red box on right). For disposal fees or for a list of landfill-banned items, call us or visit our website.



APPLIANCES (major) • AC units, dehumidifiers • washer/dryers • fridges • freezers • microwaves, stoves • woodstoves, etc.

BATTERIES • wet-cell • cell phone • automotive • small dry-cell, button cell • NiHM, NiCad • rechargeable • lithium, lithium ion



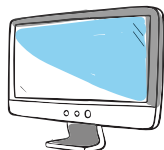
BOOKS
hard and soft cover



DOCUMENTS
for secure destruction



ELECTRONICS • computers, monitors & peripherals • TVs • video game consoles • answering machines • MP3, DVD & CD players • VCRs • stereo equipment • power supply cords



FOOD SCRAPS
including meat and bones

FIRE EXTINGUISHERS



FLUORESCENT LIGHT BULBS

• compact fluorescent lamps • U-tube, circular or straight tubes • HID • UV, Neon or other specialty lamps



HOUSEHOLD HAZARDOUS WASTE • including all paint, stains, cleaners, solvents, etc.

*Taken during HazWaste Center hours



LEAVES & YARD DEBRIS
Trimmings • garden plants • mulches • grass clippings, etc.

MERCURY DEVICES

• thermostats, intact thermometers, etc.



PROPANE TANKS
1-lb camping, 20-lb grill size, etc.

MATTRESSES
Clean only



SCRAP METAL • Any item at least 80% made from metal.



SHAVING RAZORS
blades and handles

TEXTILES AND CLOTHING
Clean & dry, in bags



TIRES

USED OIL
including filters and cooking oil



WOOD • clean lumber & natural wood (no paint, stain, chemicals, or glue.)



Residential Drop-Off

The new regional trash and recycling drop-off is open for business at 100 Kings Way (off Campground Road) in New Haven. This facility is currently operated by JR & Sons. Accepted wastes are **household recycling (unbagged), bagged trash, leaf & yard debris, and food scraps**. Large loads and special wastes should be directed to the District Transfer Station in Middlebury. This facility is open every Friday from 7 AM to 2 PM and on Saturdays from 7 AM to noon.

Town Drop-Offs

District residents & businesses can bring bagged trash, recycling (unbagged), food scraps, and leaf & yard waste (seasonally) to town drop-off stations. Some exclusions apply. Please note town drop-offs are not owned or operated by the District. To learn more, visit AddisonCountyRecycles.org.

HazWaste

HazWaste Center hours are Mon-Fri, 8 - 2 PM & Sat, 8 - 1 PM

Household products with labels that contain the words "Warning," "Danger," "Poison," or "Caution" DO NOT belong in the trash. Instead, bring these items to our HazWaste Center at no charge to District Residents:

- Automotive & engine supplies & fluids
- Home improvement supplies, including:
 - paints • stains • thinners
 - varnish • adhesives
 - tars • household cleaners
 - drain openers • garden supplies
 - fertilizers • pesticides • gas cylinders
 - mercury containing devices & lighting



PLEASE NOTE: Businesses with hazardous waste must register for an appointment time, and are responsible for all disposal costs.



ADDISON COUNTY
SOLID WASTE
MANAGEMENT DISTRICT

The Mini-Disposal Guide for Reusables, Recyclables, Compostables & Trash in Addison County

Recycling: It's the law in Vermont.

It is illegal to throw recyclables and other banned items away as landfill-bound trash.

? Got questions about disposal options, fees, and specifications? Contact ACSWMD!

Phone: (802) 388-2333

E-mail: acswmd@acswmd.org

Visit: www.AddisonCountyRecycles.org

District Transfer Station:

1223 Rte. 7 S., Middlebury

Residential Drop-Off:

100 Kings Way (off 65 Campground Rd.), New Haven

? Got questions about your curbside pickup service?

Contact your hauler.



Printed on 100% post-consumer recycled paper

BUT WAIT, THERE'S MORE! For info on what to do with over 100 materials, visit our website and click on the A to Z Guide.



Mandatory Recyclables. Banned from landfill disposal. No food residue. Items must be clean, empty & dry.

PAPER

* MUST BE EMPTY, CLEAN & DRY.*

NEWSPAPERS, MAIL,
OFFICE PAPER, ETC.



CARDBOARD & BOXBOARD



NOPE: Food residue • paper cups • Tyvek, plastic, foil, or waxed “paper” • padded mailers • plastic bags • paper towels & plates • spiral or 3-ring binders • animal food or litter bags • stickers or sticker backing

PLASTIC

* MUST BE EMPTY, & RINSED CLEAN.*

BOTTLES, TUBS & JUGS



SINGLE-USE FOODWARE



NOPE: Food residue • filmy plastic (bags, pellet bags, wraps, bubble wrap) • durable items (toys, housewares) • hazardous product containers • Styrofoam • utensils • compostable or biodegradable “plastic” • loose caps or lids under 2” across

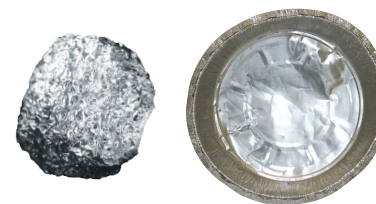
METAL

* MUST BE EMPTY, & RINSED CLEAN.*

CANS



ALUMINUM FOIL & PANS



NOPE: Food or beverage residue • propane tanks • batteries • scrap metal • containers or aerosol cans that once held hazardous materials • caps, lids or jar lids under 2” across

GLASS

* MUST BE EMPTY, & RINSED CLEAN.*

BOTTLES



JARS



NOPE: Food residue • light bulbs • dishes • Pyrex • ceramics • drinking glasses • vases • window panes • mirrors • candle jars • loose plastic or metal caps or lids smaller than 2” across

Common Blue Bin No-Nos:

Cartons • Ice cream containers, orange juice cartons, milk cartons & soup cartons are not recyclable.
Shoes & clothing • Not acceptable in blue-bins! Recycle at District Transfer Station.
Automotive parts & other scrap metal • Only metal food & beverage containers are allowed in recycling bins. Recyclable as scrap metal at District Transfer Station.
Plastic bags, Styrofoam in any form • Not accepted in blue bins! See Q&As for more info. →

Q: Why aren't plastic bags recyclable in my blue bin? **A:** They get tangled in the recycling equipment, causing facility shutdowns. Grocery stores and the District Transfer Station accept them for recycling!

Q: Why aren't paper cups recyclable? **A:** They typically have plastic or wax coatings.

Q: Do I really have to rinse my plastic & glass recyclables? **A:** Yep. Recycling works because companies that buy recyclables to make into new products need those recyclables to be uncontaminated. Food & liquids are contaminants. **Hint:** Soak peanut butter jars with hot, soapy water overnight—it'll be easier to clean.

Q: Why isn't Styrofoam recyclable? **A:** We don't produce enough in Addison County to make it economically or environmentally feasible to collect this for recycling. We recommend giving Styrofoam peanuts to local shipping companies or to those who regularly ship items.

Q: Why isn't everything with a number recyclable? **A:** Recycling symbols, known as chasing arrows, do not determine recyclability. They are meant to indicate the type of plastic the item is made from.

NOTE: All items should be at least 2” in any 2 dimensions.

