



# News to Reuse

Addison County Solid Waste Management District

Spring 2024

## Next Repair Fair: April 20, 2024!

### What is a Repair Fair?

The Repair Fair is a FREE community event where residents of Addison County can learn basic repair skills, enjoy refreshments, and help build a culture of repair with neighbors. Give your broken stuff a second chance, and come get it repaired! ACSWMD is hosting our popular Repair Fair on April 20, 2024 from 10 AM to 2 PM. We'll also have free food, fabulous raffle prizes, children's activities, and a swap shop. Come join us for a day of fun and fixing!



### What can get fixed?

#### We currently have fixers skilled in:

- Sewing / mending
- Small appliances (lamps, fans, toasters, etc.)
- Housewares / toys
- Woodworking
- Jewelry
- Bikes (basic only)

#### Please do not bring the following:

- Gasoline powered or outdoor power equipment
- Large appliances

This list is subject to change. For a broader list, check the District Website. Contact [emily@acswmd.org](mailto:emily@acswmd.org) to ask about specific items. Please note that not all items brought for repair may be fixable.



### Details:

**Date:** April 20, 2024,

**Time:** 10 AM to 2 PM

**Where:** American Legion Post 27,  
49 Wilson Road, Middlebury, VT

### NOTE:

#### This event requires pre-registration.

Any party interested in attending the repair fair must register on [AddisonCountyRecycles.org](http://AddisonCountyRecycles.org), by email at [emily@acswmd.org](mailto:emily@acswmd.org), or by phone. Scan the QR code with your phone camera to be directed to the Repair Fair Registration.

Scan me!



We strive to host inclusive, accessible events that allow all individuals to engage fully. To request accommodations, please contact Emily at 802-388-2333.

# DON'T BAG RECYCLABLES.



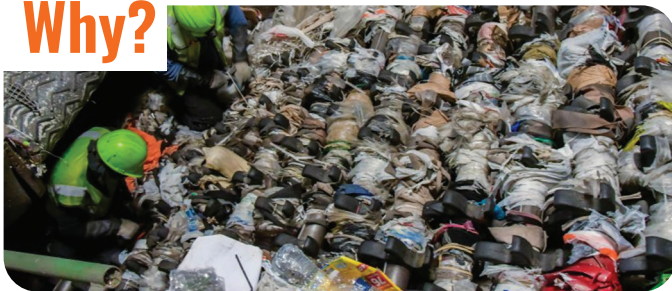
## Bagging Recycling Makes us Blue, Not Green

When it comes to recycling, keep it loose. Placing recyclables inside a plastic bag causes BIG problems when sorting recycling out by material type. Plastic bags of all kinds are contamination, so to recycle right, leave recyclables loose!



### No liner, no problem

#### Why?



Plastic bags tangle in the equipment at the materials recovery facility, where our recycling gets sorted and sold, causing shutdowns that halt work for hours. To make recycling a more efficient process, and make it safer for workers, keep all plastic bags out of your recycling bins and do NOT place recycling in bags.

### List of accepted materials in recycling

- Aluminum & steel cans
- Aluminum foil
- Aluminum pie plates
- Glass food and beverage bottles & jars
- Rigid, single-use, plastic packaging & containers
- Boxboard & corrugated cardboard
- White & colored paper
- Newspaper, magazines & catalogs
- Paper mail & envelopes
- Paperback books
- Paper bags

Containers should be empty and larger than two inches in two directions. Paper and plastic products should be dry. All materials should be as free from food as possible.

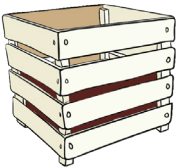
## Composting Tips: Keeping A Healthy Pile



**Carbon and Nitrogen Ratio:** Ensure that you are always adding three times the amount of brown material (hay, straw, etc.) to greens (food scraps).



**Size and volume:** Smaller ingredients take less time to decompose than larger ones because decomposers can access more surface area. Consider chopping, shredding, or cutting up coarse ingredients.



**Moisture and air:** It's important to keep the water and air content in a pile balanced so the ingredients will break down aerobically, not anaerobically. Anaerobic digestion leads to smelly compost piles.



**Temperature and time:** It takes time to create a finished compost product. Some piles will heat up and break down fast, while others will remain cool. Regardless if you are hot or cold composting, a finished product will form in about a year.

## Reporting Illegal Burning & Dumping

It is illegal in the state of Vermont to burn or dump trash. Littering, dumping, and burning trash threatens our waterways, wildlife, and public health. To combat these illegal activities, ACSWMD has made reporting burning or dumping easy and anonymous. Simply, fill out the Solid Waste Violation Complaint Form on our website. Alternatively, call ACSWMD or the Addison County Sheriff's Dept. and report the violation. The Sheriff's Department will investigate and enforce based on the information reported.

## Open Year-Round: HazWaste Center

Located at the District Transfer Station on Route 7 South in Middlebury, the HazWaste Center is open year round. Residents can drop off household hazardous waste free of charge without an appointment. Area businesses must make an appointment and pay for hazardous waste disposal. The HazWaste Center hours are Mon. through Fri., 8 AM - 2 PM, and Saturday, 8 AM – 1 PM.



## School, Business, and Town Support

Institutions, businesses, and schools are invited to reach out for help with the Universal Recycling Law (Act 148), diversion of food scraps, recycling, or waste reduction. Email [emily@acswmd.org](mailto:emily@acswmd.org) or call (802) 388-2333 and ask for Emily. We offer compliance check-ins, technical advice, classroom presentations, tours of the District Transfer Station in Middlebury, and more.

The District offers school and municipal grants that can help to fund the startup of a new recycling, composting or reuse project. Examples of past projects include schools funding water bottle refill stations, sorting tables in cafeterias, and developing on-site composting systems. This grant is available each calendar year.



## Special Materials vs. Blue Bin Recycling



**Blue bin recycling:** Refers to single-stream, commingled recycling collection where every item goes in one bin. Most curbside and town drop-off recycling is "blue bin." This nickname came from commonly used blue recycling bin; however, having a specific color bin is not a requirement.



**Special Materials:** Refers to items that are recyclable or reusable, but cannot go in the single-stream, curbside or town drop-off recycling collection. These items need to be handled in their own collection. They are often banned from landfill disposal.

### Tip:

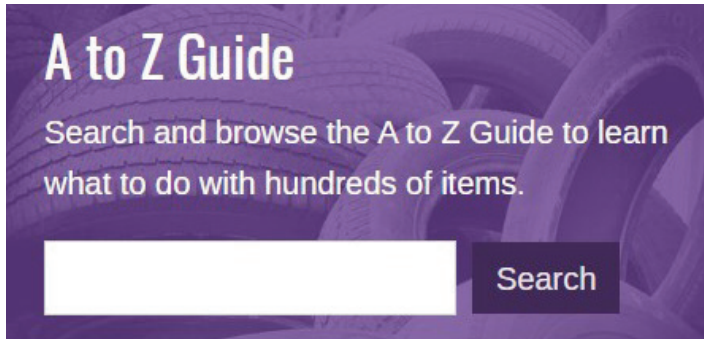
If you struggle to sort, view the A-Z Guide, an alphabetical index on items and their disposal options at [AddisonCountyRecycles.org/Guide](http://AddisonCountyRecycles.org/Guide).

## What is the Addison County Solid Waste Management District?

ACSWMD is a union municipal District that exists to cooperatively and comprehensively address the materials management interests of our 21 member towns: Addison, Bridport, Bristol, Cornwall, Ferrisburgh, Goshen, Leicester, Lincoln, Middlebury, Monkton, New Haven, Orwell, Panton, Ripton, Salisbury, Shoreham, Starksboro, Vergennes, Waltham, Weybridge, and Whiting. The District promotes waste reduction; maximizes diversion of materials through reuse, recycling, and composting; and provides for the disposal of remaining wastes.

District services include: use of the District Transfer Station in Middlebury (including the HazWaste Center); solid waste planning and management; public outreach; education programs, including school workshops and events; technical support and advocacy on waste-related issues; and enforcement against illegal burning and dumping.

Our website is a robust resource, and the A to Z Guide can tell you how to get rid of almost anything! If you can't find the info you need on our website, give us a call.



## District Transfer Station

Location: 1223 Route 7 South, Middlebury, VT  
Hours: Mon-Fri: 7 AM - 3 PM, Sat: 8 AM - 1 PM

The **HazWaste Center** at the Transfer Station is open Monday through Friday, 8 AM - 2 PM & Saturdays, 8 AM - 1 PM. Business hazardous waste is received by appointment only.

**We cannot accept household recyclables or small amounts of bagged trash from residents.** Please call us for a list of town drop-off locations, or licensed haulers for curbside collection and cleanouts. The Transfer Station accepts many other special recycling items. Visit [www.AddisonCountyRecycles.org](http://www.AddisonCountyRecycles.org) for more information.

**Recycling of the following landfill-banned items is mandatory for residents and businesses in the District:** Newspaper, cardboard, boxboard, white & mixed paper, magazines & catalogs, plastic bottles (#1-#2), glass bottles (clear, green, brown), and metal cans. These mandated recyclables can be commingled in the same bin along with other non-mandated recyclable items that your hauler offers to collect. Contact your hauler or local drop-off for disposal of food scraps and leaf & yard waste. Food scraps, leaf & yard waste, and clean wood are all accepted at the District Transfer Station.

**Loads must be properly sorted.** We reserve the right to inspect & reject or surcharge improperly sorted loads.

**All visitors must check in at the Scalehouse. Thank you!**



“News to Reuse” is a publication of the Addison County Solid Waste Management District. Questions or comments? Visit our website, [www.AddisonCountyRecycles.org](http://www.AddisonCountyRecycles.org) or contact us at (802) 388-2333 or [acswmd@acswmd.org](mailto:acswmd@acswmd.org). This newsletter is printed on recycled paper.

## Postal Patron

- Addison
- Bridport
- Bristol
- Ripton
- Cornwall
- Salisbury
- Ferrisburgh
- Shoreham
- Goshen
- Starksboro
- Leicester
- Vergennes
- Lincoln
- Waltham
- Middlebury
- Weybridge
- Whiting
- Monkton
- New Haven

ACSWMD  
1223 Rte. 7 South  
Middlebury, VT 05753



STANDARD A  
US POSTAGE  
PAID  
Middlebury, VT  
Permit No. 70